

FAST FACTS

BAYLOR HEALTH CARE SYSTEM

Baylor Health Care System Foundation was created to support Baylor Health Care System's mission and vision. It does this by supporting four areas: patient care, research, education and capital.

BAYLOR HEALTH CARE SYSTEM FOUNDATION

More than \$318 million has been distributed
to Baylor Health Care System

Founded in 1978

\$237 million managed in more than
600 funds

8,400 active donors

PATIENT CARE

Total patient encounters: 2.5 million

Inpatient admissions: 121,000

Outpatient registrations: 554,000

Emergency Department visits: 342,000

Births: 20,000

Serving 10 counties in North Texas

PATIENT CARE STAFF

Employees: 19,500

Active medical staff: 3,000

Nurses: 5,500

CLINICAL RESEARCH

Active research protocols: 801

in 20 specialties

Papers published in fiscal year 2008: 469

EDUCATION

Residents and fellows: 234

Graduate medical programs: 31

Nursing scholarship program

CAPITAL

More than 200 Baylor-branded access points

Hospitals: 15, plus 10 ventured and affiliated

Licensed beds: 3,423

Physician clinic locations: 122

Research facilities: 10

RECENTLY OPENED FACILITIES

Plano Heart Hospital Expansion

Baylor Medical Center at Carrollton

BUMC Parking Garage

Plano Professional Office Building II, Garage

Plano Parking Garage Expansion

Baylor Family Medicine Expansion

Baylor Plano Diagnostic Imaging at Craig Ranch

Glen Rose Medical Center and Hunt Regional

Healthcare became BHCS affiliates

WORK IN PROGRESS

Southern Sector Health Initiative

Cancer Center at Baylor University Medical Ctr

Baylor Southwest Fort Worth ED Expansion

Garland ED Expansion

Grapevine 5th and 6th Floor Shell Expansion

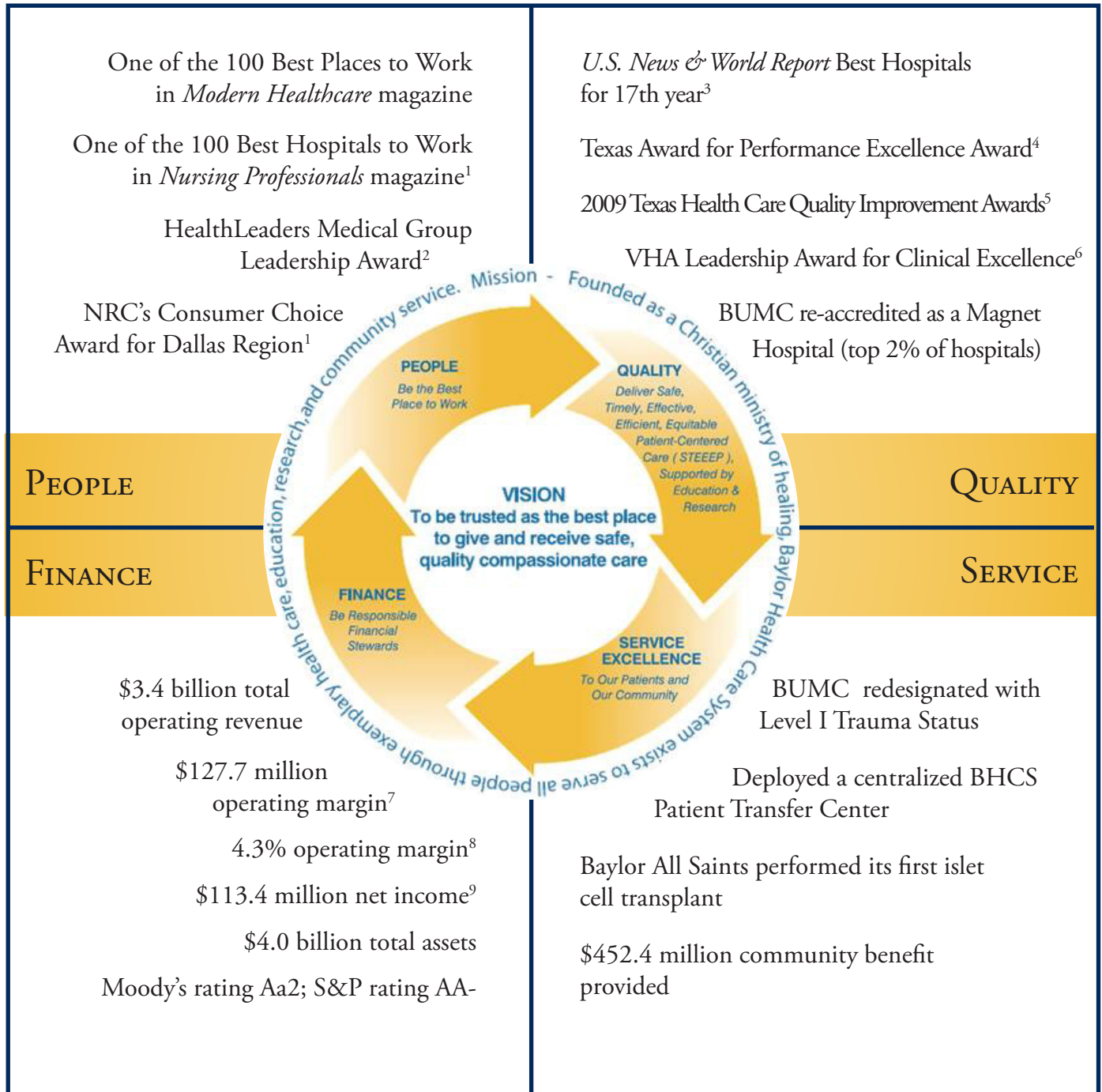
Grapevine Parking Garage

Baylor McKinney Hospital and POB

FAST FACTS

BAYLOR HEALTH CARE SYSTEM

Baylor achieves its mission and vision by holding itself to high standards in four pillars: people, finance, quality and service. Below are a few of the ways it has achieved success in each.



1. Baylor Dallas 2. Health Texas 3. Baylor Dallas 4. Grapevine 5. BHVH, BMCI, BRMCG, THHBP, BUMC, BASMC, BRMCP and BMCG 6. Grapevine and Irving 7. Excludes JVMI 8. Excluding realized investment income/JVMI 9. Excluding unrealized gains/JVMI